



Welcome to Year 3

Meet the teacher meeting

September 2023

Our School Vision Statement



We are a caring Christian community where everyone adopts an “I can” attitude; everyone feels valued, safe and loved by God. We celebrate our God-given individuality, achievements and talents and we aspire, with God’s help, to become the best that we can be. We believe that each one of us has the ability to achieve our highest potential, living and learning in the fullness of God.

I can do all things through Christ who gives me strength.
Philippians 4v13

Our ACE Expectations – arriving ready to learn.

- ▶ The gate and classroom doors will open at 8:30 each day. Learning starts as soon as the children come in with an opportunity to consolidate learning and complete tasks to prepare for the learning of the day.
- ▶ The gate will close at 8:45 and registers are taken.



Our ACE Expectations – coming to school every day

- ▶ Celebrate good attendance with the children each week in our Friday worship. Classes with best attendance win extra time on the trim trail.
- ▶ Expected attendance is 96% or better.



Equates To:



Our ACE Expectations – looking super smart!

Ashford CE Primary School Uniform



- Black trousers, short or long.
- Black pinafore dress or skirt.
- Black or grey socks.
- Blue V-neck sweatshirt or sweat cardigan, which preferably have the school logo.
- White Polo Shirts (which preferably have the school logo) for R to Year 2
- Year 3 - Year 6 School tie and white shirt, short or long sleeved, in the Winter terms (October until Easter).
- Polo shirts which can have school logo may be worn between Easter and October half term only.
- Blue and white checked or striped dresses may be worn between Easter and October half term.



Where can you buy uniform:

- Logo items from School Days
 - Primark
 - Matalan
 - Tesco
 - Tu (Sainsbury's)
 - Asda George
-
- Our school uniform can be bought from School Days who are contactable on:
Tel: 0208 898 4881; or online:
www.schooldaysllp.co.uk

Meet the team

Miss Corry



Mrs Chisholm



Ms Duguid



Mrs Dearman



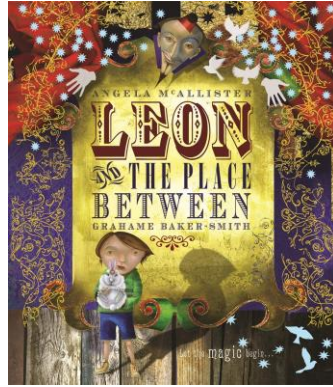
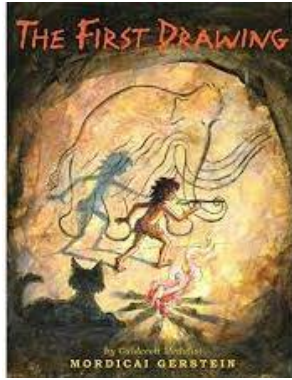
Mrs Morris



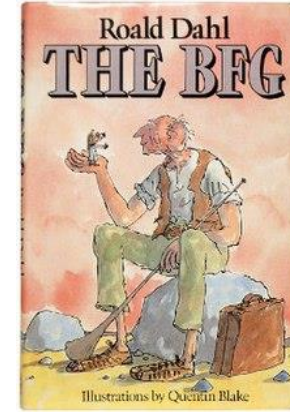
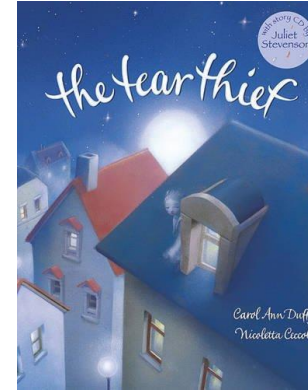
English

- ▶ We will be studying the following books during our English work this year:

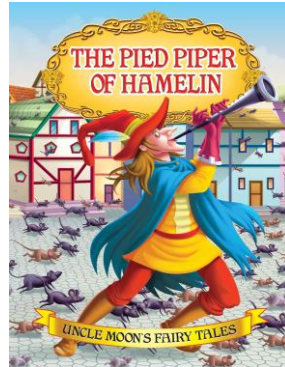
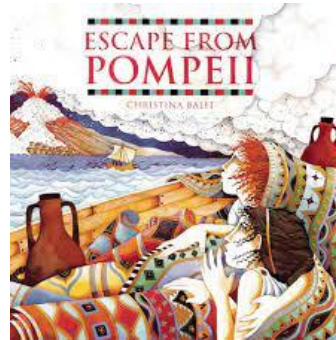
Autumn 1



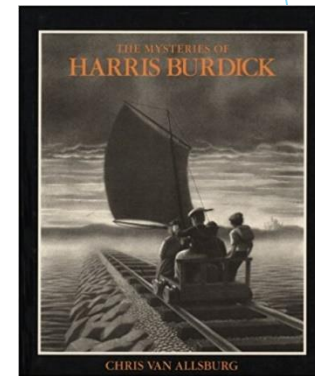
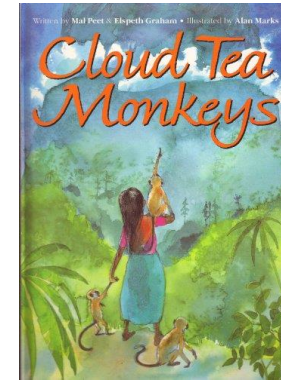
Autumn 2



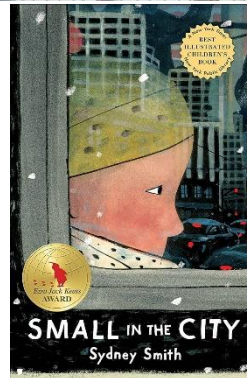
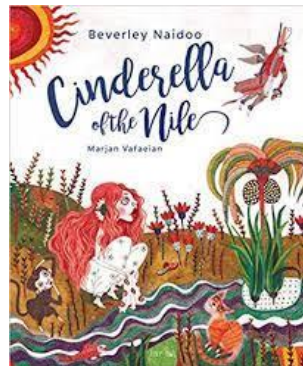
Spring 1



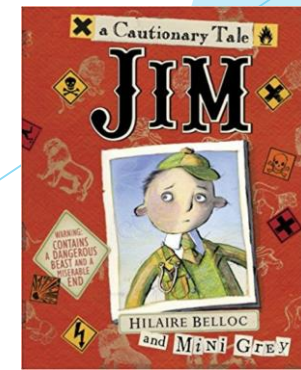
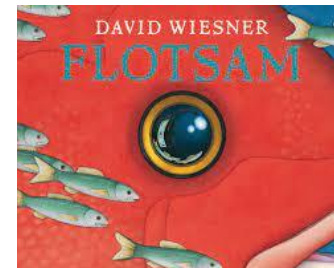
Spring 2



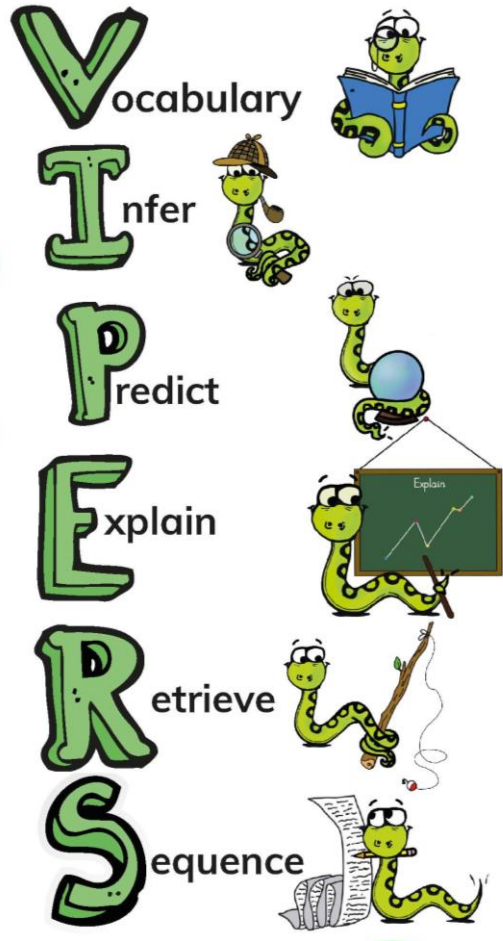
Summer 1



Summer 2



Reading



We teach whole class reading three times a week on Tuesday, Wednesday and Thursday.

We use a key text to teach the skills needed for reading comprehension.

Reading is a vital skill that is required to access learning in all areas of the curriculum. You can support your child at home by encouraging them to read their home reading book at least 5 times a week.



Spelling



Spellings are introduced and taught to the children in class every Monday.

All children have their own log in so they can access this leaning at home.

You can support your child with their spelling by helping them to regularly log on to spelling shed.



Maths

- ▶ We follow the National Curriculum to plan our Maths teaching.
- ▶ We follow the White Rose mastery scheme to ensure progression across the school, with catch-up materials built in to support children and target any gaps in learning.
- ▶ Maths lessons are taught daily.
- ▶ Other opportunities for maths across the school day are planned for including, morning maths, timetables sessions and regular revision sessions.
- ▶ Number facts and timetables are key to success in other areas of Maths so it is extremely important to practice these regularly.



Maths

long term plan

	Week 1	Week 2	Week 3	Week 4	Week 5	Week 6	Week 7	Week 8	Week 9	Week 10	Week 11	Week 12
Autumn	Place Value Retrieval Practice of place value from year two.			Addition and Subtraction Explicitly link to retrieve previous learning of money and measures from year two.					Length and Perimeter Explicitly link to retrieve previous learning of addition and subtraction.			Consolidate
Spring	Multiplication and Division Explicitly link to retrieve previous learning of money, measures and length and perimeter.							Mass and Capacity Explicitly link to retrieve previous learning of addition and subtraction/multiplication and division.			Money Explicitly link to retrieve previous learning of four operations.	
Summer	Fractions Explicitly link to retrieve previous learning of division with a focus on denominator and divisor.					Time Explicitly link to retrieve previous learning of fractions.		Shape Explicitly link to retrieve previous learning of fractions focusing on fractions of shapes.		Statistics Explicitly link to retrieve previous learning of four operations- using scales.		Consolidate

TT Rockstars

All children should have a login to TTRockstars.

This will be set to revise all timestables. Children should login at least 3 times a week, they should play 2 garage and one sound check game per week.

At the end of each half term the children's heat map will be sent home along with a 'The timestables I need to practice card'.

Please use these to practice the timestables you child needs support with. There will also be extra revision activities on a regular bases.



TT Rockstars

	10	2	5	3	4	8	6	7	9	11	12
10	10 x 10	10 x 2	10 x 5	10 x 3	10 x 4	10 x 8	10 x 6	10 x 7	10 x 9	10 x 11	10 x 12
2	2 x 10	2 x 2	2 x 5	2 x 3	2 x 4	2 x 8	2 x 6	2 x 7	2 x 9	2 x 11	2 x 12
5	5 x 10	5 x 2	5 x 5	5 x 3	5 x 4	5 x 8	5 x 6	5 x 7	5 x 9	5 x 11	5 x 12
3	3 x 10	3 x 2	3 x 5	3 x 3	3 x 4	3 x 8	3 x 6	3 x 7	3 x 9	3 x 11	3 x 12
4	4 x 10	4 x 2	4 x 5	4 x 3	4 x 4	4 x 8	4 x 6	4 x 7	4 x 9	4 x 11	4 x 12
8	8 x 10	8 x 2	8 x 5	8 x 3	8 x 4	8 x 8	8 x 6	8 x 7	8 x 9	8 x 11	8 x 12
6	6 x 10	6 x 2	6 x 5	6 x 3	6 x 4	6 x 8	6 x 6	6 x 7	6 x 9	6 x 11	6 x 12
7	7 x 10	7 x 2	7 x 5	7 x 3	7 x 4	7 x 8	7 x 6	7 x 7	7 x 9	7 x 11	7 x 12
9	9 x 10	9 x 2	9 x 5	9 x 3	9 x 4	9 x 8	9 x 6	9 x 7	9 x 9	9 x 11	9 x 12
11	11 x 10	11 x 2	11 x 5	11 x 3	11 x 4	11 x 8	11 x 6	11 x 7	11 x 9	11 x 11	11 x 12
12	12 x 10	12 x 2	12 x 5	12 x 3	12 x 4	12 x 8	12 x 6	12 x 7	12 x 9	12 x 11	12 x 12

	10	2	5	3	4	8	6	7	9	11	12
10	10 x 10	10 x 2	10 x 5	10 x 3	10 x 4	10 x 8	10 x 6	10 x 7	10 x 9	10 x 11	10 x 12
2	2 x 10	2 x 2	2 x 5	2 x 3	2 x 4	2 x 8	2 x 6	2 x 7	2 x 9	2 x 11	2 x 12
5	5 x 10	5 x 2	5 x 5	5 x 3	5 x 4	5 x 8	5 x 6	5 x 7	5 x 9	5 x 11	5 x 12
3	3 x 10	3 x 2	3 x 5	3 x 3	3 x 4	3 x 8	3 x 6	3 x 7	3 x 9	3 x 11	3 x 12
4	4 x 10	4 x 2	4 x 5	4 x 3	4 x 4	4 x 8	4 x 6	4 x 7	4 x 9	4 x 11	4 x 12
8	8 x 10	8 x 2	8 x 5	8 x 3	8 x 4	8 x 8	8 x 6	8 x 7	8 x 9	8 x 11	8 x 12
6	6 x 10	6 x 2	6 x 5	6 x 3	6 x 4	6 x 8	6 x 6	6 x 7	6 x 9	6 x 11	6 x 12
7	7 x 10	7 x 2	7 x 5	7 x 3	7 x 4	7 x 8	7 x 6	7 x 7	7 x 9	7 x 11	7 x 12
9	9 x 10	9 x 2	9 x 5	9 x 3	9 x 4	9 x 8	9 x 6	9 x 7	9 x 9	9 x 11	9 x 12
11	11 x 10	11 x 2	11 x 5	11 x 3	11 x 4	11 x 8	11 x 6	11 x 7	11 x 9	11 x 11	11 x 12
12	12 x 10	12 x 2	12 x 5	12 x 3	12 x 4	12 x 8	12 x 6	12 x 7	12 x 9	12 x 11	12 x 12



Wider curriculum

Science
Rocks
Forces and magnets
Animals including humans (bones)
Animals including humans (food)
Plants
Light



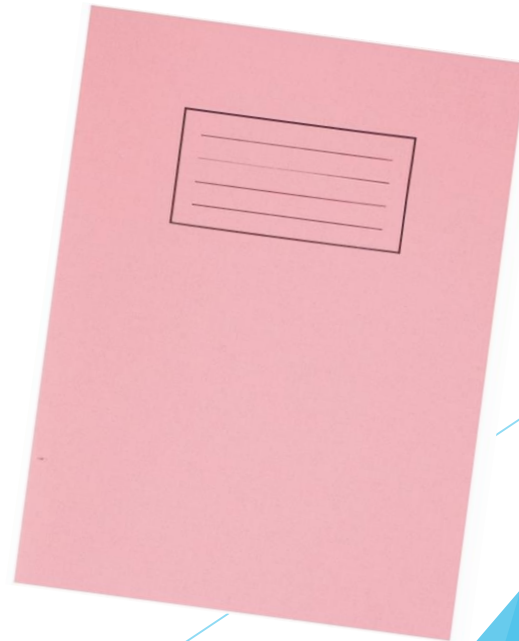
Wider curriculum

History and Geography

Stone Age to Iron Age	
	Mountains
Romans	
	Where does our food come from?
Egyptians	
	Seaside

Home learning

- ▶ Projects will be set week 2 (pre learning task) - handed in week 4.
- ▶ Summary learning task set in week 5 returned after half term




PE

- ▶ PE will be held on Tuesday's and Thursday's. Please send your child to school in their school uniform.


Ashford CE Primary School

PE Kit




- White T-Shirt (School logo or plain)
- Black Shorts
- Black Joggers
- Black Zip Hoodie
- Black Plimsolls (indoor)
- Plain Trainers (optional for outdoor PE)

All item must be plain with no logos except the White T-shirt which can have the school logo.







Where can you buy PE uniform:

- Logo T-shirt from School Days.
- House Colour T-Shirt for Sports Day via the PTA form on school website.
- Plain PE items can be purchased from:
 - Primark
 - Matalan
 - Tesco
 - Tu (Sainsbury's)
 - Asda George

Average price for a T-Shirt is £2
Joggers £5
Hoodie £8
Shorts £2.50

Open Afternoons

- ▶ **A wonderful opportunity to share your child's learning each term.**
- ▶ Autumn term - Junior 7th December 2:30-3:30
- ▶ Spring term - Junior 27th March 2:30-3:30
- ▶ Summer term - Junior 18th July 2:30- 3:30



Working in partnership

- ▶ If you have any questions please see your child's class teacher in the first instance.
- ▶ Teachers can be contacted via the school office or by e mail: info@ashford-primary.surrey.sch.uk

